

48/43  
DRAWING NUMBER  
PLAN HOLD CORPORATION • IRVINE, CALIFORNIA  
ORDER REF. NUMBER 07348

DRAWING NUMBER  
PLAN HOLD CORPORATION • IRVINE, CALIFORNIA  
ORDER REF. NUMBER 07348

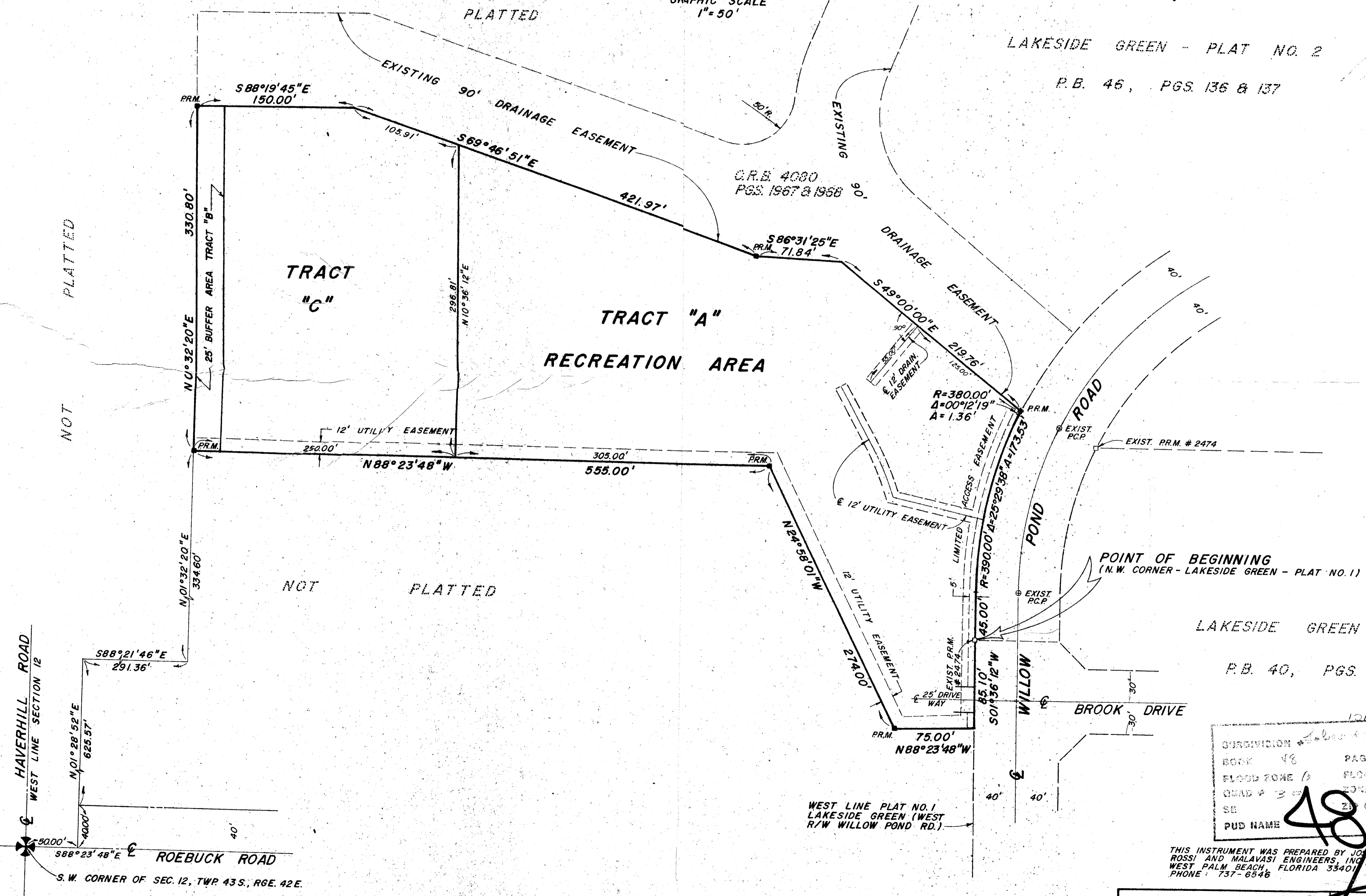
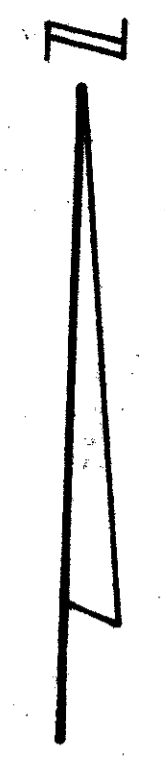
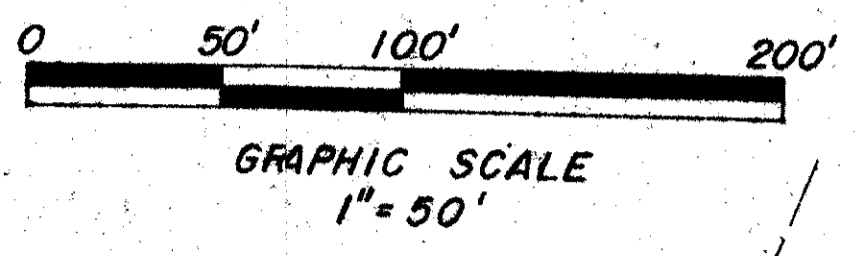
DRAWING NUMBER  
PLAN HOLD CORPORATION • IRVINE, CALIFORNIA  
ORDER REF. NUMBER 07348

DRAWING NUMBER  
PLAN HOLD CORPORATION • IRVINE, CALIFORNIA  
ORDER REF. NUMBER 07348

A PORTION OF A P.U.D.  
**LAKESIDE GREEN-PLAT NO. 3**  
SECTION 12, TOWNSHIP 43 SOUTH, RANGE 42 EAST  
PALM BEACH COUNTY, FLORIDA  
IN 2 SHEETS SHEET NO. 2  
DECEMBER, 1983

43

STATE OF FLORIDA }  
COUNTY OF PALM BEACH }  
This Plat was filed for record at \_\_\_\_\_ M.  
this \_\_\_\_\_ day of \_\_\_\_\_  
19 \_\_\_\_\_, and duly recorded in Plat Book No. \_\_\_\_\_  
on page \_\_\_\_\_  
By JOHN B. DUNKLE, Clerk Circuit Court  
D.C.



LAKESIDE GREEN - PLAT NO. 2  
P.B. 46, PGS. 136 & 137

LAKESIDE GREEN - PLAT NO. 1  
P.B. 40, PGS. 20, 21 & 22

SUBDIVISION	Lakeside Green
BOOK	48
PAGE	43
FLOOD ZONE	B
QUAD	3
SE	23
PUD NAME	LAKESIDE GREEN

THIS INSTRUMENT WAS PREPARED BY JOSEPH M. TUCKER IN THE OFFICES OF ROSSI AND MALAVASI ENGINEERS, INC., 167 WEST PALM BEACH LAKES BLVD., WEST PALM BEACH, FLORIDA 33401. PHONE: 737-6546

**ROSSI AND MALAVASI ENGINEERS, INC.**  
WEST PALM BEACH, FLORIDA

**A PORTION OF A P.U.D. LAKESIDE GREEN-PLAT NO. 3 IN 2 SHEETS SHEET NO. 2**

Date	DECEMBER, 1983	Designed	R. ANDERSON	Scale	1" = 50'	Sheet	2 of 2
Approved		Drawn	C. GOSS	Job No.			
		Checked		File No.			

0265-307

48/43